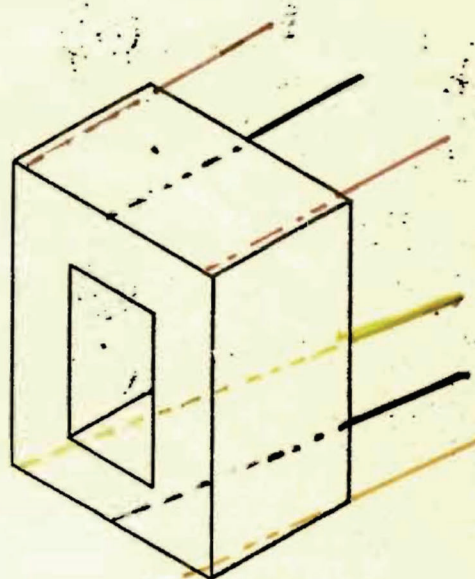
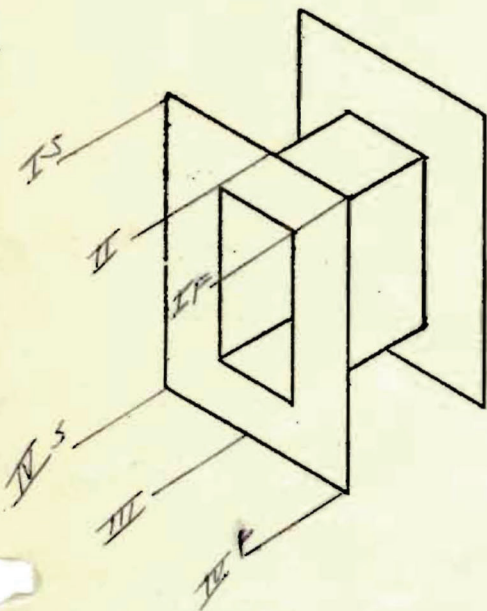


JOB BIN NY-029
 CORE 1E 25 014 H. 4
 CASE HF 20
 MINIMAL LEADS 30GA CW 7
 EMBEDMENT WAX w/cg

NO. JE-MB-A (73118)
 DATE _____
 CUSTOMER NO. _____
 SERVICE 450 sq. to 450 sq.
MIC. SKIDGING



	USE	DCR	WIRE	TURNS	TAP	INSULATION
I	PR1		38 ss	945		4 LAYERS, 002K
II	Shield		0007 w	1 2"		5 "