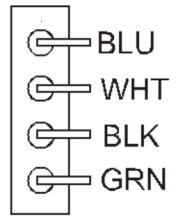
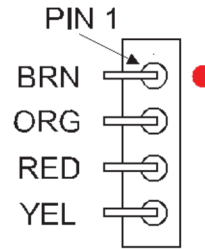
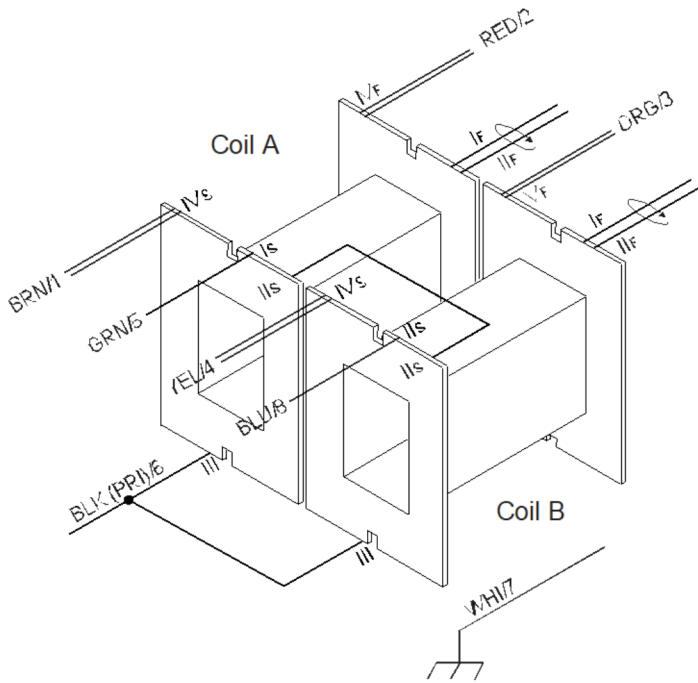


Bobbin:	2-05834 (Cosmo)	Part No:	CM-21024
Core:	18DU 8006 {HyMu 80 / 6mil}	Date:	February 4, 2021
Case:	C Can - PC Pins	Customer:	
Terminals:	PC Pins	Service	Phono
Embedment:	Epoxy		1:10/20



	Use	Notes	Wire	Turns	Tap	Insulation	Notes	Setup
I	SEC-A	3Pi	44spn	1050	{350/Pi x 3}	4L Mylar tape		W = 4.5 Offset 1= 0.5 P=0.068 Off 2=4.55 Off3=9.10
II	SEC-B	3Pi**	44spn	1050	{350/Pi x 3}	4L Mylar tape		
III	SHLD		0.001 Cu			2 L Mylar tape		