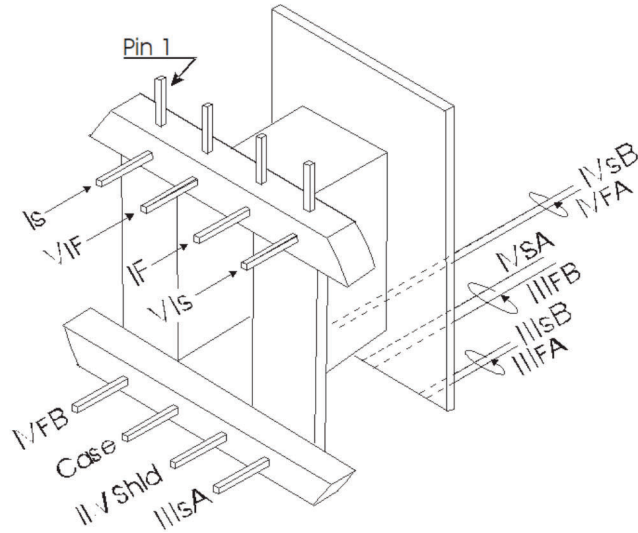




Reichenbach Engineering

9050 Independence Ave.
 Canoga Park, California 91304
 ☎ (818) 993-4644 ☎ (818) 993-4604

Bobbin:	1/4 x 1/4 PC	Part No:	CM-17901PC Rev B
Core:	2425 LE 8414	Date:	December 14, 2017
Case:	RD1125-5-0.875	Customer:	Gianluca Sperti
Terminals:	PC	Service:	Microphone Input
Embedment:	E-Cast F-82		150/600:86.4K 1+1:24



	Use:	Notes:	Wire:	Turns	Tap	Insulation
1	Pin		28 AWG	226		41 B 100 4 mil