

TRANSFORMER

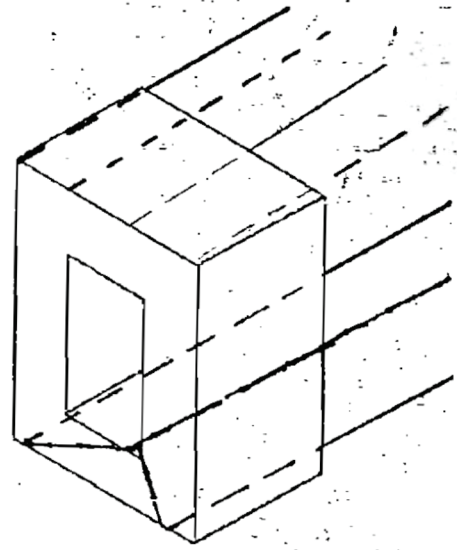
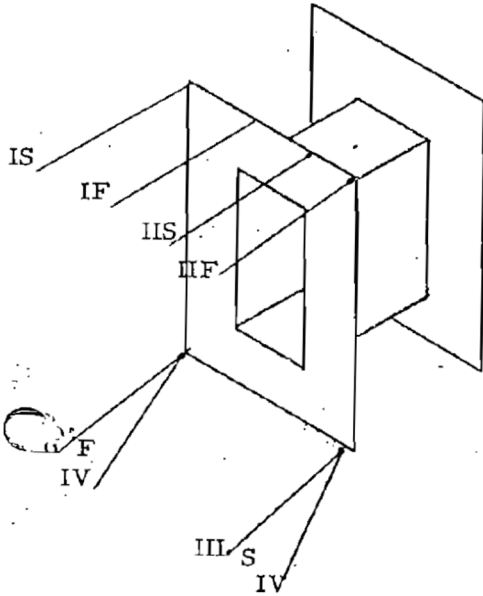
INTERNATIONAL ELECTRONIC

RESEARCH CORPORATION

DRAWING NY 11  
 CORE EI 75 26 Ga M19 IxI 3/4  
 CASE 3/4 Vert. Channel Frames w/ end-bells  
 TERMINAL 22 Ga Leads 6" Cut & 7"  
 EMBEDMENT Varnish Before Channel Frames  
 S.S. on top Channel Frame UREI B11754  
 RE (code date)

DIVISION

NO. U.R.E.I. B 11754 (7339)  
 DATE  
 CUSTOMER NO. U.R.E.I.  
 SERVICE



|   | USE | DCR | WIRE | TURNS | TAP | INSULATION -             |
|---|-----|-----|------|-------|-----|--------------------------|
| 1 | PRI | *   | 33ss | 1200  |     | 1 L. .005 Pa 4 1/2" Long |
|   | SEC | *   | 33ss | 1200  |     | 2 L. .005 Pa 4 1/2" Long |