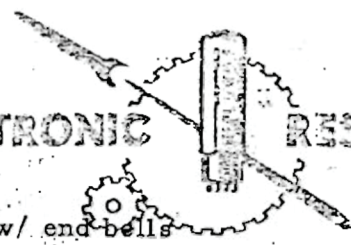


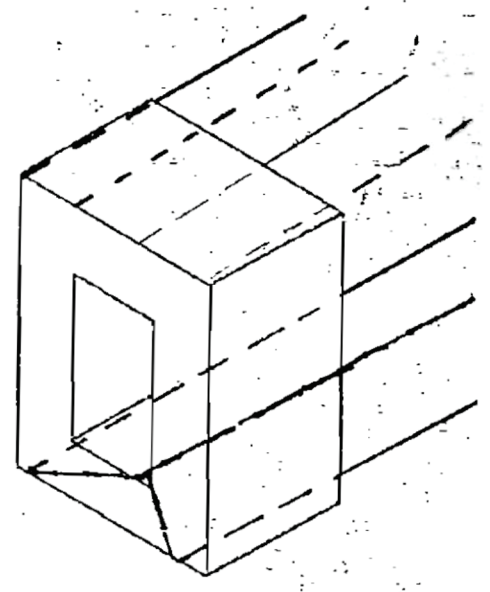
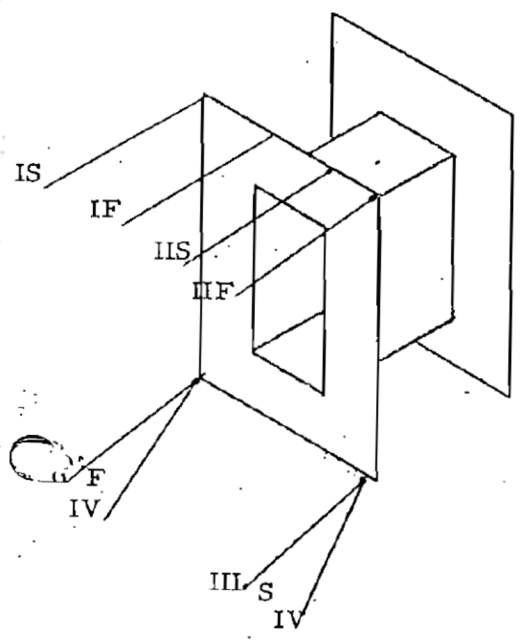
TRANSFORMER INTERNATIONAL ELECTRONIC

DIVISION RESEARCH CORPORATION



CABIN NY 11
 CORE EI 75 26 Ga M19 IXI 3/4
 CASE 3/4 Vert. Channel Frames w/ end bells
 TERMINAL 22 Ga Leads 6" Cut & 7"
 EMBEDMENT Varnish Before Channel Frames
 S.S. on top Channel Frame UREI B11754
 RE (code date)

NO. U.R.E.I. B 11754 (7339)
 DATE _____
 CUSTOMER NO. U.R.E.I.
 SERVICE _____



	USE	DCR	WIRE	TURNS	TAP	INSULATION -
I	PRI	*	33ss	1200		1 L. .005 Pa 4 1/2" Long
II	PRI	*	33ss	1200		2 L. .005 Pa 9" "