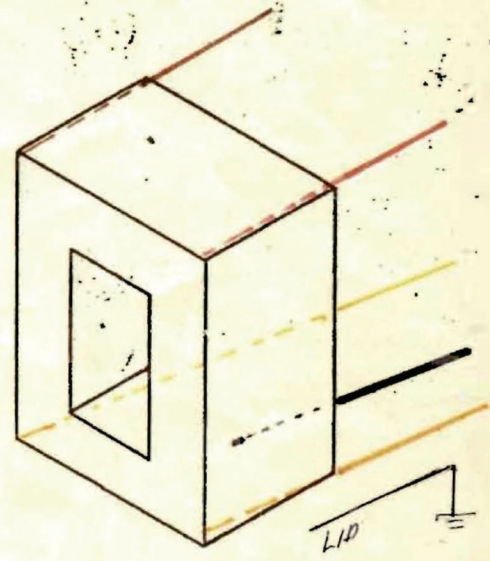
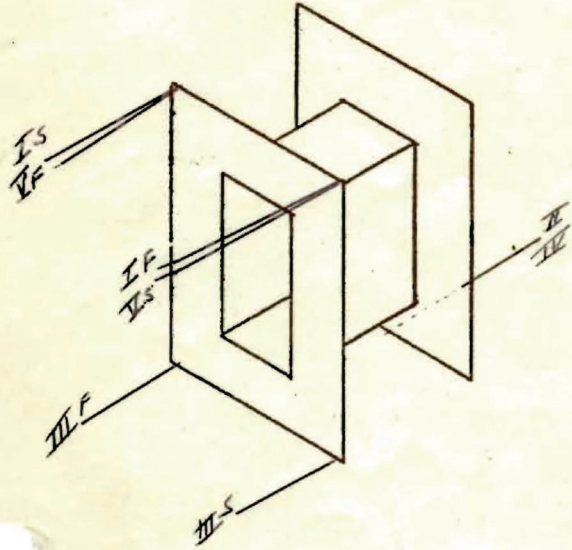


COBBIN NY 6
 CORE LE 25.014 High M
 CASE HE 20
 TERMINAL Leads cut 7
 EMBEDMENT WAX $\frac{1}{8}$ "

NO. AS-304
M-10-1012 (72112)
 DATE _____
 CUSTOMER NO. Associated Sound
 SERVICE 150 & Tr 10K



	USE	DCR	WIRE	TURNS	TAP	INSULATION
I	PR1		37 ss	399		5 LAYERS .0025
II	Shield		.0007cu 15g	1		8 "